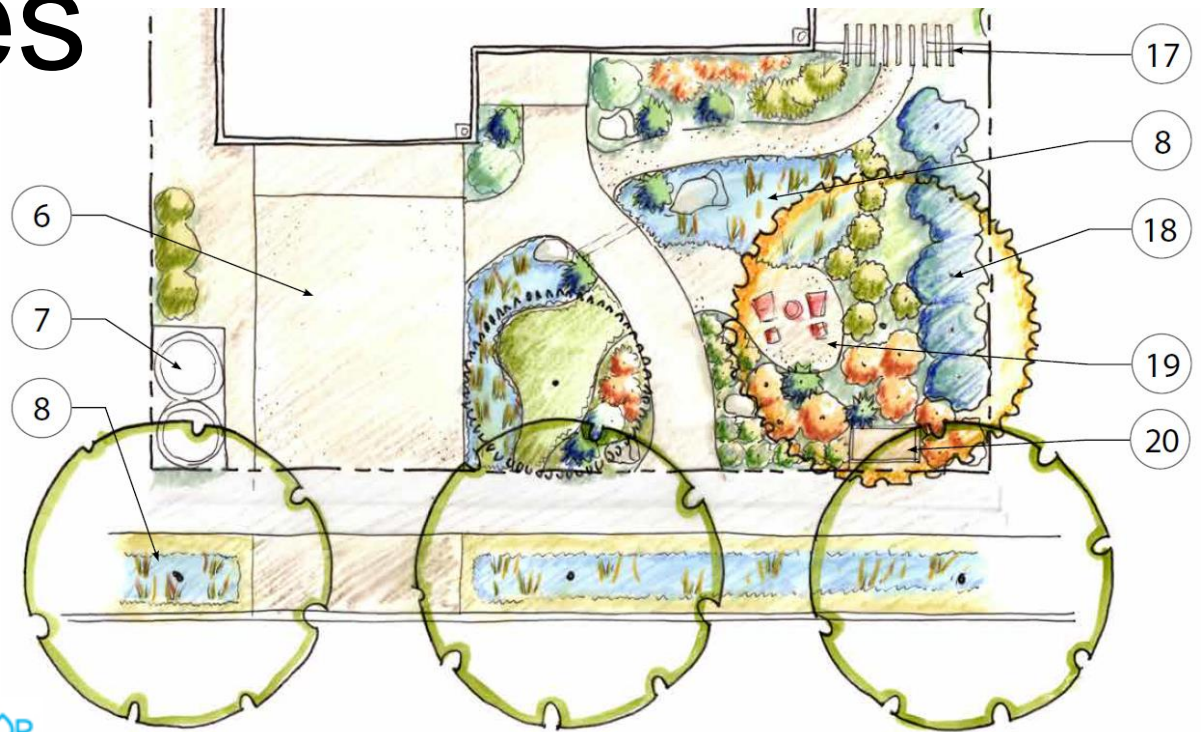


Using the Free Landscape Design Templates

3/28/2019



Overview

1. Verify and Select
2. Adjust Layout & Planting Plan
3. Adjust Irrigation Plan
4. Complete 75/25 Rule Worksheet
5. Complete Application Packet
6. Submit plans
7. Complete your project



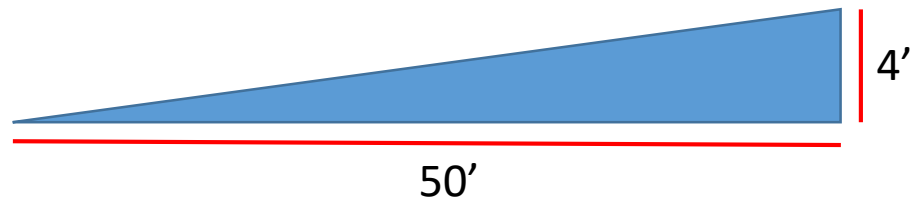
Verify and Select



OUR FUTURE IN EVERY DRÖP

Verify

- Verify total planting area is up to 2,500 SQ FT
 - Yes = can use the Templates
 - No = may need to hire qualified design professional
- Templates intended for slopes $<8\%$



Select

- Choose the plan that best fits your aesthetic
- There are many plan options
- Choose the one you like most, not the one that has a similar shape
- Renderings coming soon!
 - Available now
 - Native Adaptive A
 - Sonoma Contemporary B

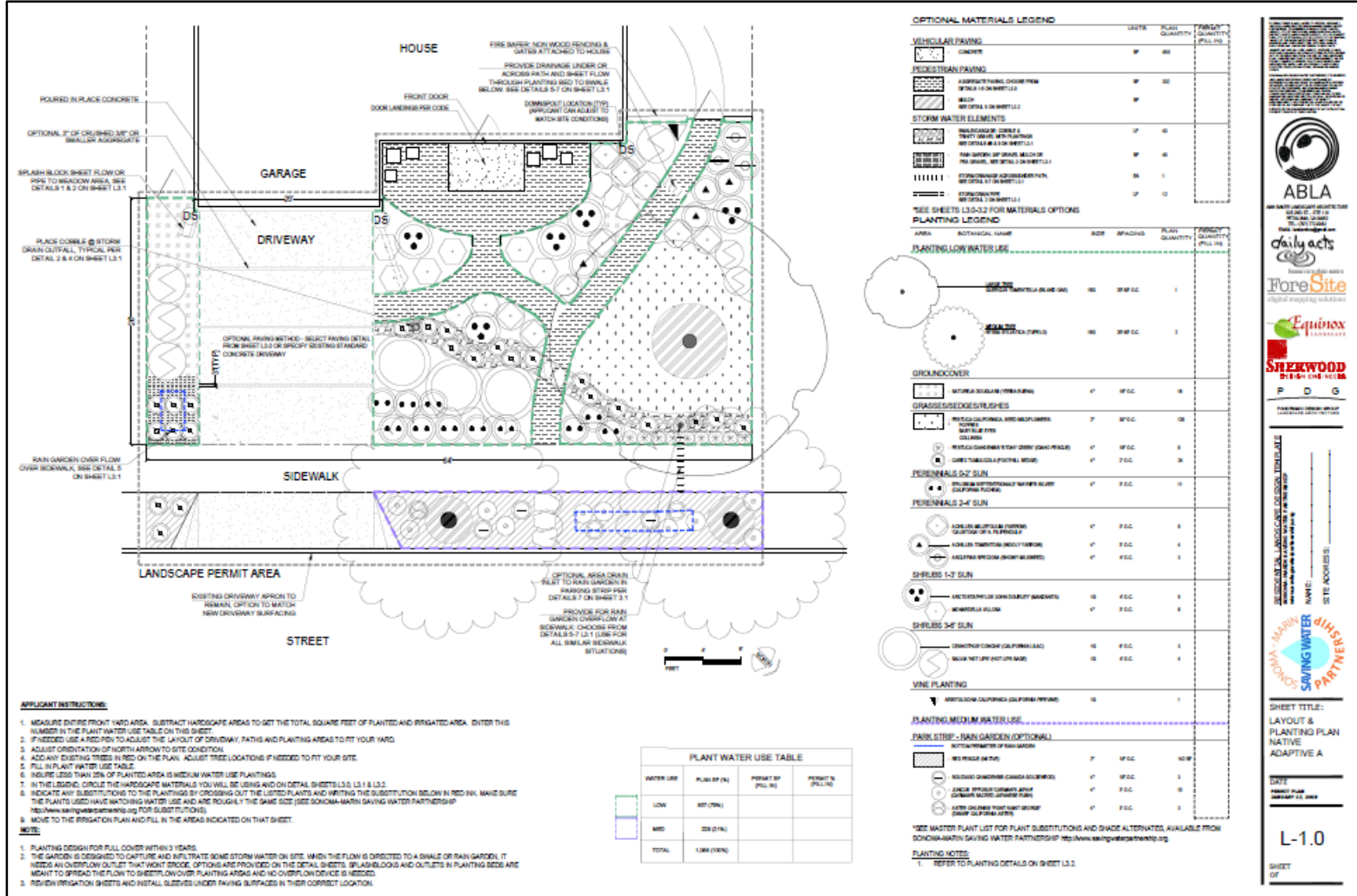


Print

- Print your site plan in 1/4" scale
- Print large format (24"x36") of Layout & Planting Plan (L-1.0)
- Print large format (24"x36") Irrigation Plan Sheet (L-2.0)
- Recommend color



Sheet L-1.0



ABLA
 ANIMATE LANDSCAPE QUANTITIES
 2014-2015
 1000 10th Street, Suite 100
 San Francisco, CA 94103
 Tel: 415.774.8888
 Fax: 415.774.8889
www.abla.com

daily acts
 Based on the idea that
 digital mapping solutions

ForeSite
 digital mapping solutions

Equinox

STEAKWOOD
 P D G
 FASHION DESIGN OFFICE

RESIDENTIAL LANDSCAPE DESIGN PERMIT SHEET
 PROJECT NAME: _____
 SITE ADDRESS: _____

MAKING SAVING WATER PARTNER

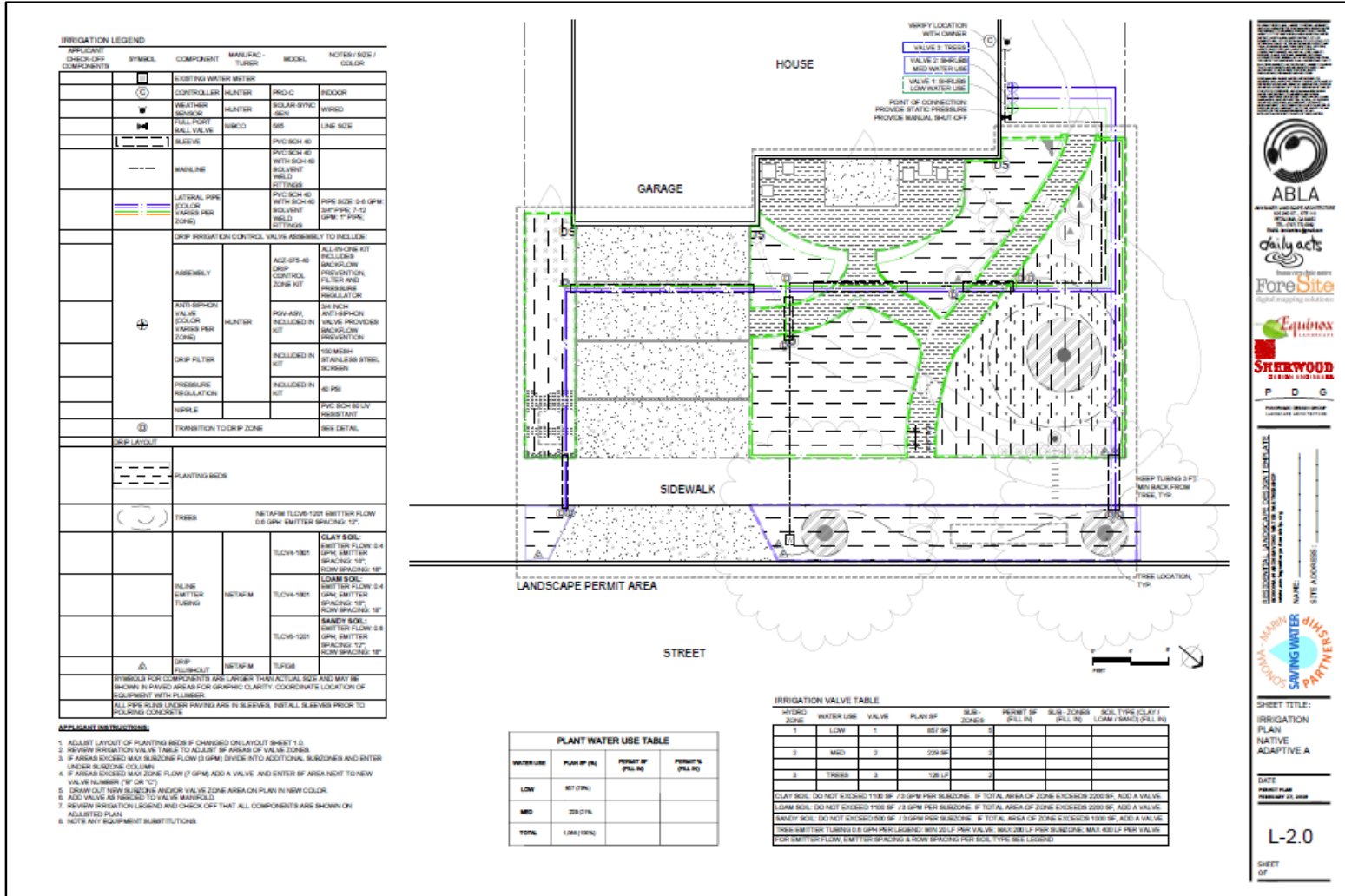
SHEET TITLE:
 LAYOUT & PLANTING PLAN
 NATIVE ADAPTIVE A

DATE:
 PERMIT PLAN
 08/20/2015

L-1.0

SHEET
 OF _____

Sheet L-2.0



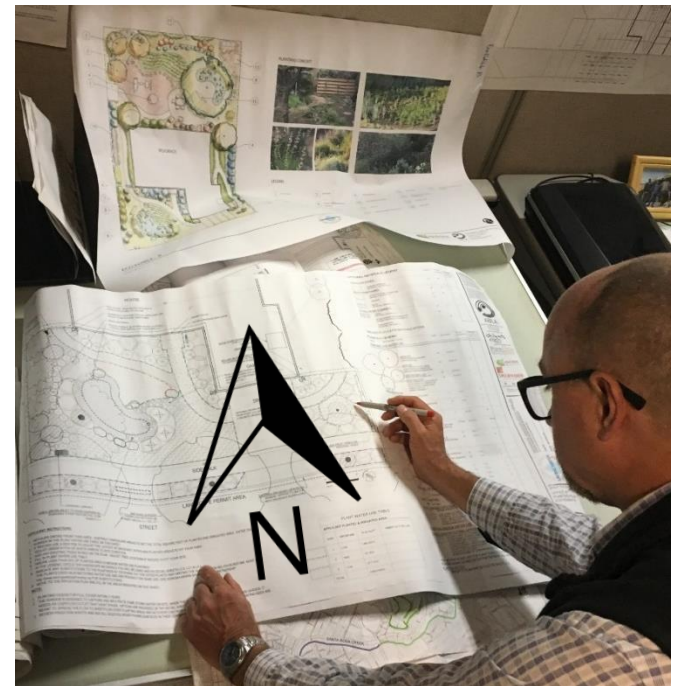
Adjust Layout & Planting Plan



OUR FUTURE IN EVERY DRÖP

Adjust Layout & Planting Plan (Sheet L-1.0)

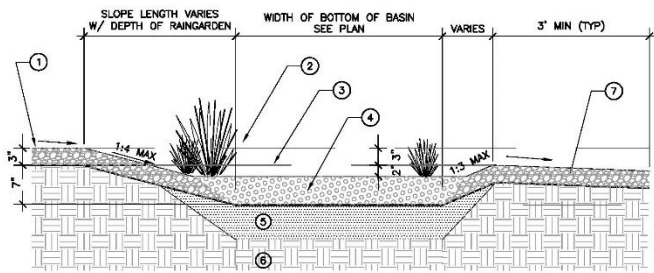
- Adjust Lot Lines
 - Lay the Template Sheet L-1.0 *on top* of your site plan and line up the front yard to match
 - Draw in property boundary, front of the building footprint, driveway, sidewalk, etc.



Consider Optional Elements



- Optional path and sidewalk details
- Optional landscape elements
 - Rainwater harvesting
 - Graywater reuse
 - Rain garden
 - Disconnected downspouts
- Optional driveway details



3 VEGETATED RAINGARDEN W/ OVERLAND FLOW INLET AND OUTLET (OPTIONAL)
SCALE: NONE

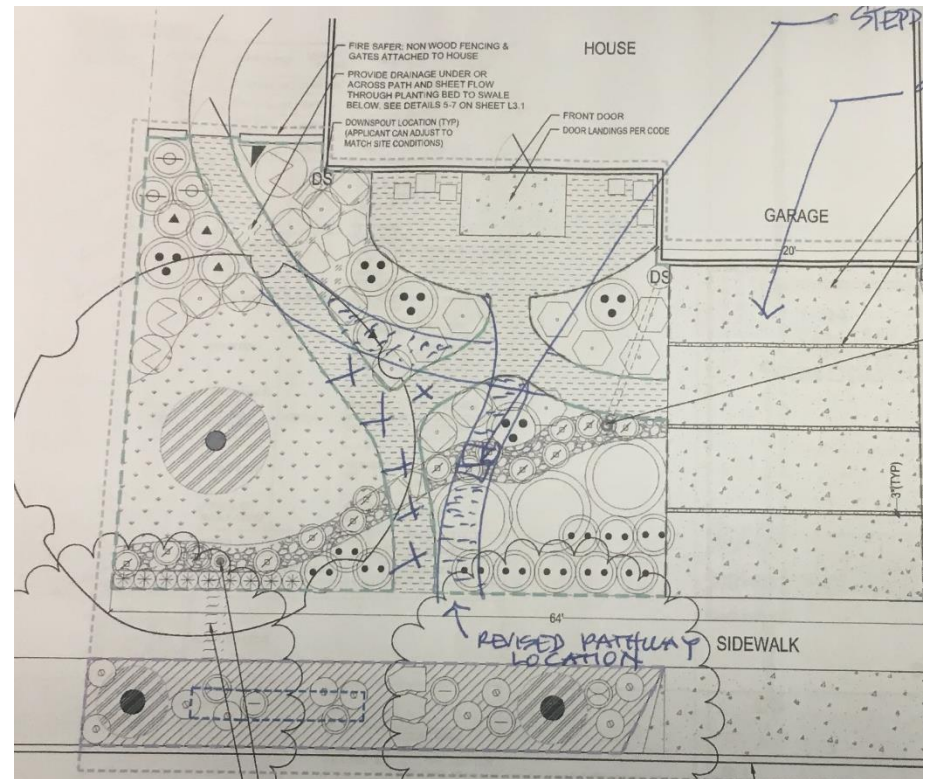
Plan Sheet	Title	Required	Additional Information
L-3.0	L.I.D. Paving Details	No	L.I.D. = Low Impact Development. These permeable paving material options help reduce runoff by allowing more rain to soak into the ground.
L-3.1	Rain Gardens & Swale Details	No	Swales, rain gardens and disconnected downspouts direct water from the roof to the garden where it can soak into the ground.
GW-1.0	Greywater -Laundry to Landscape	No	Directing water from the washing machine to your garden saves water.
GW-1.1	Greywater -Branched Drain System	No	Directing water from bathroom sinks and bathtub(s) to your garden saves water. Building Permit required
RW-1.0	Rainwater Harvesting	No	Collecting rainwater into a tank and directing overflow to your rain garden saves water and helps recharge groundwater.



OUR FUTURE IN EVERY DRÖP

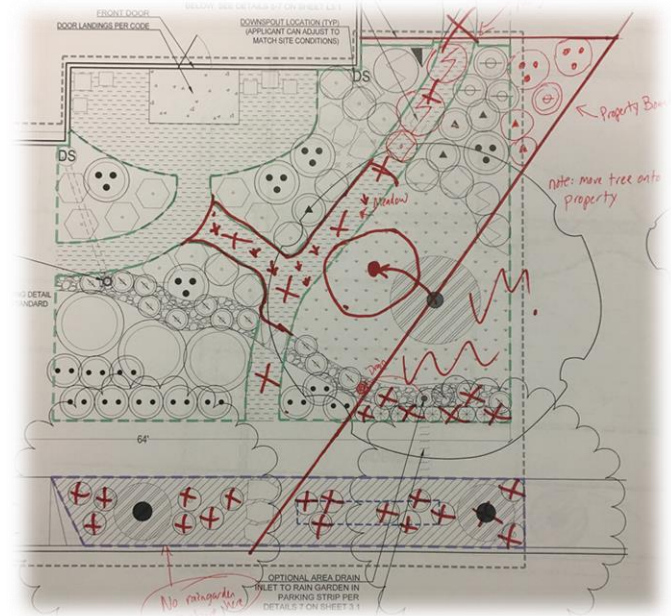
Revise Layout & Planting Plan (Sheet L-1.0)

- Add any existing trees
- Modify hardscape and landscape feature locations
 - Paths
 - Driveways
 - Optional elements



Revise Layout & Planting Plan (Sheet L-1.0)

- Adjust Plantings
 - Identify locations of trees first
 - Expand or reduce plantings to match your site
 - Expand groupings
 - Reduce groupings

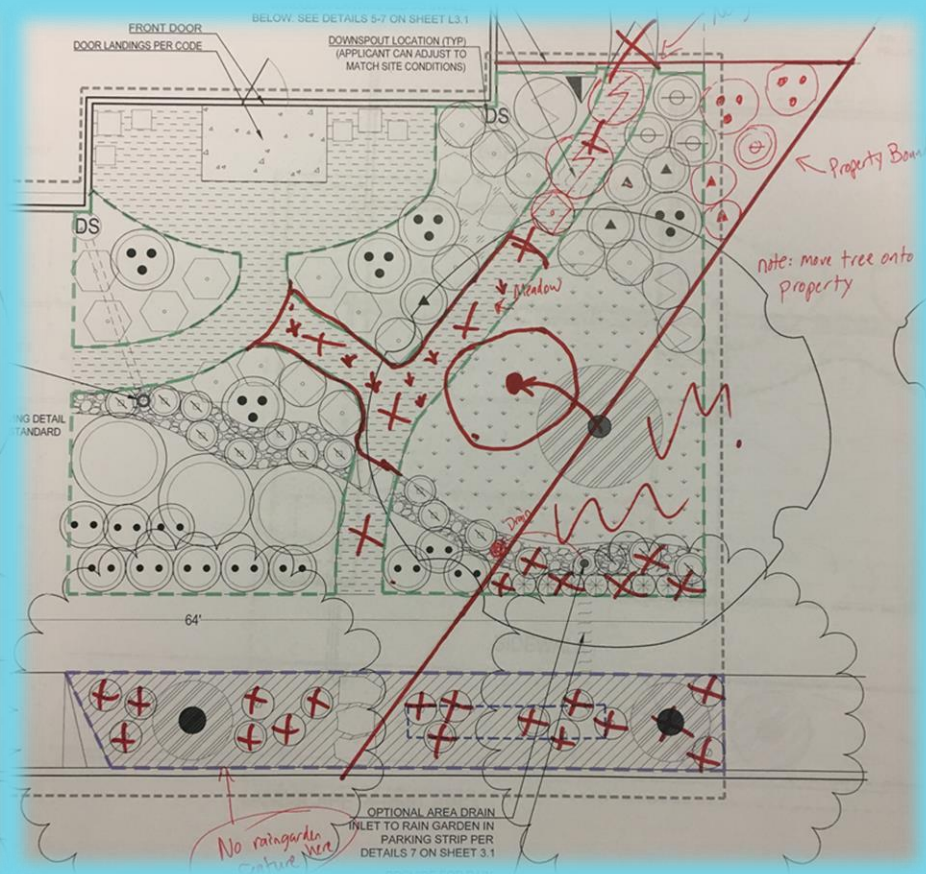


Adjust plantings - Different lot size

- If your lot is 25% smaller than the size of your chosen plan, reduce plantings by 25%
- If your lot is 10% larger than the size of your chosen plan, increase plantings by 10%
- **Minimum requirement:** you can plant half the density, but this will require much more maintenance



Adjust Planting Example



Revise Layout and Planting Plan (Sheet L-1.0)

- Substitute Plants
 - Use Master Plant Substitution List
 - Swap like for like plants
 - Water use
 - Size at maturity
 - Consider
 - Sun vs. shade needs
 - Color
- Plantings must be 75% low-water use



Two plant lists

- ▶ Low water use and Medium water use
 - Trees, shrubs, grasses etc.,
 - Exposure
 - Color
 - Size at maturity
 - Plant spacing
 - And more...

Master Plant Substitution List - Low Water Use Plants

Botanical Name	Common Name	Category	Height	Spread	Evergreen or Deciduous	Exposure	Color
<i>Thymus</i> vars	Thyme varieties	Groundcover	1-2"	4-8"	Evergreen	Sun	White
GRASSES/SEDGES/RUSHES							
<i>Bouteloua gracilis</i> 'Blonde Ambition'	Side Oats Gramma	Grasses/Sedges/Rushes	18"	18"	Evergreen		Foliage
<i>Calamagrostis filosa</i>	Cape Mendocino Reed	Grasses/Sedges/Rushes	18"	18"	Evergreen	Sun to pt sha	Foliage
<i>Carex densa</i>	Dense Sedge	Grasses/Sedges/Rushes	1'	1'	Evergreen	Sun to pt sha	Foliage
<i>Carex proaequalis</i> , <i>C. pansa</i>	Slender Field Sedge	Sedges/Turf Alt.	18"	18"	Evergreen		Foliage
<i>Carex tumulicola</i>	Berkeley Sedge	Grasses/Sedges/Rushes	18"	18"	Evergreen	Sun to pt sha	Foliage
<i>Deschampsia caespitosa</i>	Slender Hair Grass	Grasses/Sedges/Rushes	18"	18"	Evergreen	Sun-Pt Shade	Foliage
<i>Festuca californica</i>	California Fescue	Grasses/Sedges/Rushes	24"	12"	Evergreen	PT. Shade	Foliage
<i>Festuca idahoensis</i>	Idaho Fescue	Grasses/Sedges/Rushes	16"	16"	Evergreen	Sun-Pt Shade	Foliage
<i>Festuca rubra</i>	Creeping Red Fescue	Grasses/Turf Alt.	16"	30"	Evergreen	Sun-Pt Shade	Foliage
<i>Hordeum brachyanthemum</i>	Meadow Barley	Grasses/Sedges/Rushes	18"	18"	Evergreen		
<i>Juncus patens</i>	Blue Rush	Grasses/Sedges/Rushes	2'	2'	Evergreen	Sun - Pt Shad	Foliage
<i>Muhlenbergia dubia</i>	Pine Muhly Grass	Grasses/Sedges/Rushes	2'	2'	Evergreen	Sun	Foliage
<i>Muhlenbergia rigens</i>	Deer Grass	Grasses/Sedges/Rushes	3'	3'	Evergreen	Sun	Foliage
<i>Sporobolus airoides</i>	Alkali Sacaton	Grasses/Sedges/Rushes	30"	30"	Evergreen	Sun	Foliage
<i>Stipa cernua</i>	Nodding needle grass	Grasses/Sedges/Rushes	24"	24"	0.1m - 0.5m	Sun	Foliage
NATIVE WILDFLOWERS							
<i>Clarkia amoena whitneyi</i>	Farewell to Spring	Annual & Perennial Wildflowers	36"	36"		Sun-Pt Shade	Pink & White
<i>Clarkia rubicunda</i> ssp. <i>Bladei</i>	Ruby Clarkia	Annual & Perennial Wildflowers	30"	30"		Sun-Pt Shade	Reddish pink
<i>Eschscholzia californica</i>	CA Poppies	Annual & Perennial Wildflowers	16"	16"	Semi Decid	Sun	Orange
<i>Gilia menziesii</i>	Baby Blue Eyes	Annual & Perennial Wildflowers	8"	16"		PT. Shade	Blue
<i>Gilia tricolor</i>	Bird's Eye Gilia	Annual & Perennial Wildflowers	8"	16"		Sun-Pt Shade	Purple/White
<i>Platygllossa</i>	Tidy Tips	Annual & Perennial Wildflowers	12"	12"		Sun	Yellow/White

Master Plant Substitution List - Low Water Use Plants

Botanical Name	Common Name	Category	Height	Spread	Evergreen or Deciduous	Exposure	Color
<i>Thymus</i> vars	Thyme varieties	Groundcover	1-2"	4-8"	Evergreen	Sun	White
GRASSES/SEDGES/RUSHES							
<i>Bouteloua gracilis</i> 'Blonde Ambition'	Side Oats Gramma	Grasses/Sedges/Rushes	18"	18"	Evergreen		Foliage
<i>Calamagrostis filosa</i>	Cape Mendocino Reed	Grasses/Sedges/Rushes	18"	18"	Evergreen	Sun to pt sha	Foliage
<i>Carex densa</i>	Dense Sedge	Grasses/Sedges/Rushes	1'	1'	Evergreen	Sun to pt sha	Foliage
<i>Carex proaequalis</i> , <i>C. pansa</i>	Slender Field Sedge	Sedges/Turf Alt.	18"	18"	Evergreen		Foliage
<i>Carex tumulicola</i>	Berkeley Sedge	Grasses/Sedges/Rushes	18"	18"	Evergreen	Sun to pt sha	Foliage
<i>Deschampsia caespitosa</i>	Slender Hair Grass	Grasses/Sedges/Rushes	18"	18"	Evergreen	Sun-Pt Shade	Foliage
<i>Festuca californica</i>	California Fescue	Grasses/Sedges/Rushes	24"	12"	Evergreen	PT. Shade	Foliage
<i>Festuca idahoensis</i>	Idaho Fescue	Grasses/Sedges/Rushes	16"	16"	Evergreen	Sun-Pt Shade	Foliage
<i>Festuca rubra</i>	Creeping Red Fescue	Grasses/Turf Alt.	16"	30"	Evergreen	Sun-Pt Shade	Foliage
<i>Hordeum brachyanthemum</i>	Meadow Barley	Grasses/Sedges/Rushes	18"	18"	Evergreen		
<i>Juncus patens</i>	Blue Rush	Grasses/Sedges/Rushes	2'	2'	Evergreen	Sun - Pt Shad	Foliage
<i>Muhlenbergia dubia</i>	Pine Muhly Grass	Grasses/Sedges/Rushes	2'	2'	Evergreen	Sun	Foliage
<i>Muhlenbergia rigens</i>	Deer Grass	Grasses/Sedges/Rushes	3'	3'	Evergreen	Sun	Foliage
<i>Sporobolus airoides</i>	Alkali Sacaton	Grasses/Sedges/Rushes	30"	30"	Evergreen	Sun	Foliage
<i>Stipa cernua</i>	Nodding needle grass	Grasses/Sedges/Rushes	24"	24"	0.1m - 0.5m	Sun	Foliage
NATIVE WILDFLOWERS							
<i>Clarkia amoena whitneyi</i>	Farewell to Spring	Annual & Perennial Wildflowers	36"	36"		Sun-Pt Shade	Pink & White
<i>Clarkia rubicunda</i> ssp. <i>Bladei</i>	Ruby Clarkia	Annual & Perennial Wildflowers	30"	30"		Sun-Pt Shade	Reddish pink
<i>Eschscholzia californica</i>	CA Poppies	Annual & Perennial Wildflowers	16"	16"	Semi Decid	Sun	Orange
<i>Gilia menziesii</i>	Baby Blue Eyes	Annual & Perennial Wildflowers	8"	16"		PT. Shade	Blue
<i>Gilia tricolor</i>	Bird's Eye Gilia	Annual & Perennial Wildflowers	8"	16"		Sun-Pt Shade	Purple/White
<i>Platygllossa</i>	Tidy Tips	Annual & Perennial Wildflowers	12"	12"		Sun	Yellow/White

Revise Layout and Planting Plan (Sheet L-1.0)

- Update Planting Legend
- Count Planting Groups
- Add clarifying Notes

The image displays a landscape design plan for a rain garden. On the left is a table titled 'PLANTING LOW WATER USE' with columns for AREA, BOTANICAL NAME, SIZE, SPACING, PLANT QUANTITY, and PERCENT QUANTITY. The table lists various plants such as Epilobium 'Orange Carpet', Juncus patens, and Cistus skanbergii. On the right is a site plan showing a rain garden layout with handwritten annotations in red and black ink, including 'Property Boundary', 'note: main tree onto Property', and 'rain garden'. The plan also includes a 'PARK STRIP - RAIN GARDEN' section with plants like Agastache mexicana and Carduus pinnatifidus.

AREA	BOTANICAL NAME	SIZE	SPACING	PLANT QUANTITY	PERCENT QUANTITY (PLANT %)
LARGE TREE	QUERCUS TEMERULA (SLAND OAK)	100"	20' x 20' OC	1	
	QUERCUS SILVIFOLIA (TUPERO)	100"	20' x 20' OC	2	
GROUNDCOVERS					
	EPILOBIMUM 'ORANGE CARPET'			9	
GRASSES/SEDGES/RUSHES					
	PERPOSA CALIFORNICA, BESS BLUEPOPPERS	2"	12" OC	100	
	POPPERS				
	BABY BLUE EYES				
	COLISEUM				
	PERSTICA CH-ORSEA 'STONY CRACK (DWARF FESCUE)	4"	12" OC	31	
	CAREX PARADOXICA (PARADOXIC CAREX)	4"	12" OC	3	
PERENNIALS 0-2' SUN					
	JUNCUS patens	4"	12" OC	11	
PERENNIALS 2-4' SUN					
	ACHILLEA MILLEFOLIUM (YARROW)	4"	12" OC	3	
	ACHILLEA Millefolium (YARROW)	4"	12" OC	3	
	ACHILLEA TOMENTOSA (WOOLY YARROW)	4"	12" OC	3	
	ACHILLEA SPECIOSA (SPICERY YARROW)	4"	12" OC	3	
SHRUBS 1-3' SUN					
	CISTUS SKANBERGII	3'	12" OC	6	
	MONARDELLA VILLOSA	4"	12" OC	3	
SHRUBS 3-6' SUN					
	BRANCHYLODON CALIFORNICA (LILAC)	10"	12" OC	3	
	SAHYA HOT LIPS (HOT LIPS SHRUB)	10"	12" OC	4	
VINE PLANTING					
	WEST COAST CALIFORNICA (CALIFORNIA PIPEVINE)	10"		1	
PLANTING MEDIUM WATER USE					
PARK STRIP - RAIN GARDEN					
BOTTOM PERIMETER OF 50' IN GARDEN					
	AGASTACHE MEXICANA	20"	12" OC	100	
	AGASTACHE MEXICANA	20"	12" OC	3	
	AGASTACHE MEXICANA	20"	12" OC	3	
	ASTER CHALLENGE PINK (PINK GERARD)	4"	12" OC	10	
	ASTER CHALLENGE PINK (PINK GERARD)	4"	12" OC	3	



OUR FUTURE IN EVERY DROP

daily acts
ForeSite
Equinox
SHERWOOD
P D G
RESIDENTIAL LANDSCAPE DESIGN TEMPLATE
NAME: _____
SITE ADDRESS: _____
SAVING WATER PARTNERSHIP
SHEET TITLE:
LAYOUT & PLANTING PLAN
NATIVE ADAPTIVE
DATE:
PERMIT PLAN
JULY 3, 2018
L-1.0
SHEET
OF

The 75/25 Rule

- 75% of the front yard planted areas must be low water use
 - Remember this when adding or substituting plants
 - There are irrigation system impacts too
 - Hints
 - Stick with the layout of plants and trees as specified on the Templates
 - Substitute only low water use plants and trees.



Special Landscape Areas

- Edible plants and fruit trees are considered Special Landscape Areas
 - Qualify as exception to the 75/25 Rule
 - Must be irrigated separately








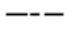

Adjust Irrigation Plan



OUR FUTURE IN EVERY DRÖP

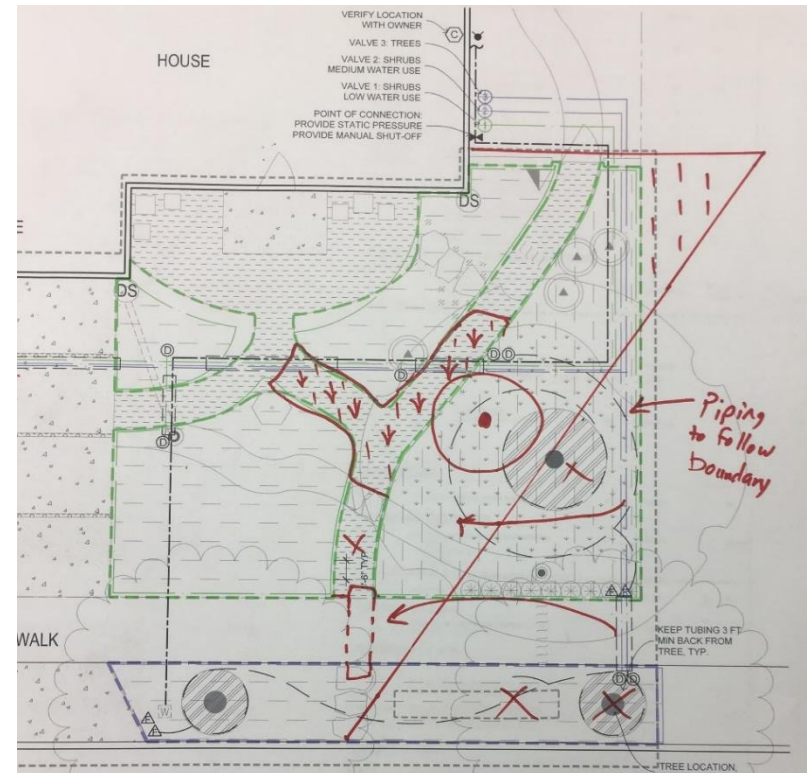
The Irrigation Legend

- Lists all irrigation components used
(make/model/size/manufacturer)
- Symbols represent each component drawn on the irrigation plan
- Match symbols for irrigation modifications
- Build per plans!

IRRIGATION LEGEND					
APPLICANT CHECK-OFF COMPONENTS	SYMBOL	COMPONENT	MANUFACTURER	MODEL	NOTES / SIZE / COLOR
		EXISTING WATER METER			
		CONTROLLER	HUNTER	PRO-C	INDOOR
		WEATHER SENSOR	HUNTER	SOLAR-SYNC -SEN	WIRED
		FULL PORT BALL VALVE	NIBCO	585	LINE SIZE
		SLEEVE		PVC SCH 40	
		MAINLINE		PVC SCH 40 WITH SCH 40 SOLVENT WELD FITTINGS	
		LATERAL PIPE (COLOR VARIES PER ZONE)		PVC SCH 40 WITH SCH 40 SOLVENT WELD FITTINGS	PIPE SIZE: 0-8 GPM: 3/4" PIPE; 7-12 GPM: 1" PIPE;
		DRIP IRRIGATION CONTROL VALVE ASSEMBLY TO INCLUDE:			
					ALL-IN-ONE KIT (MAY VARY)

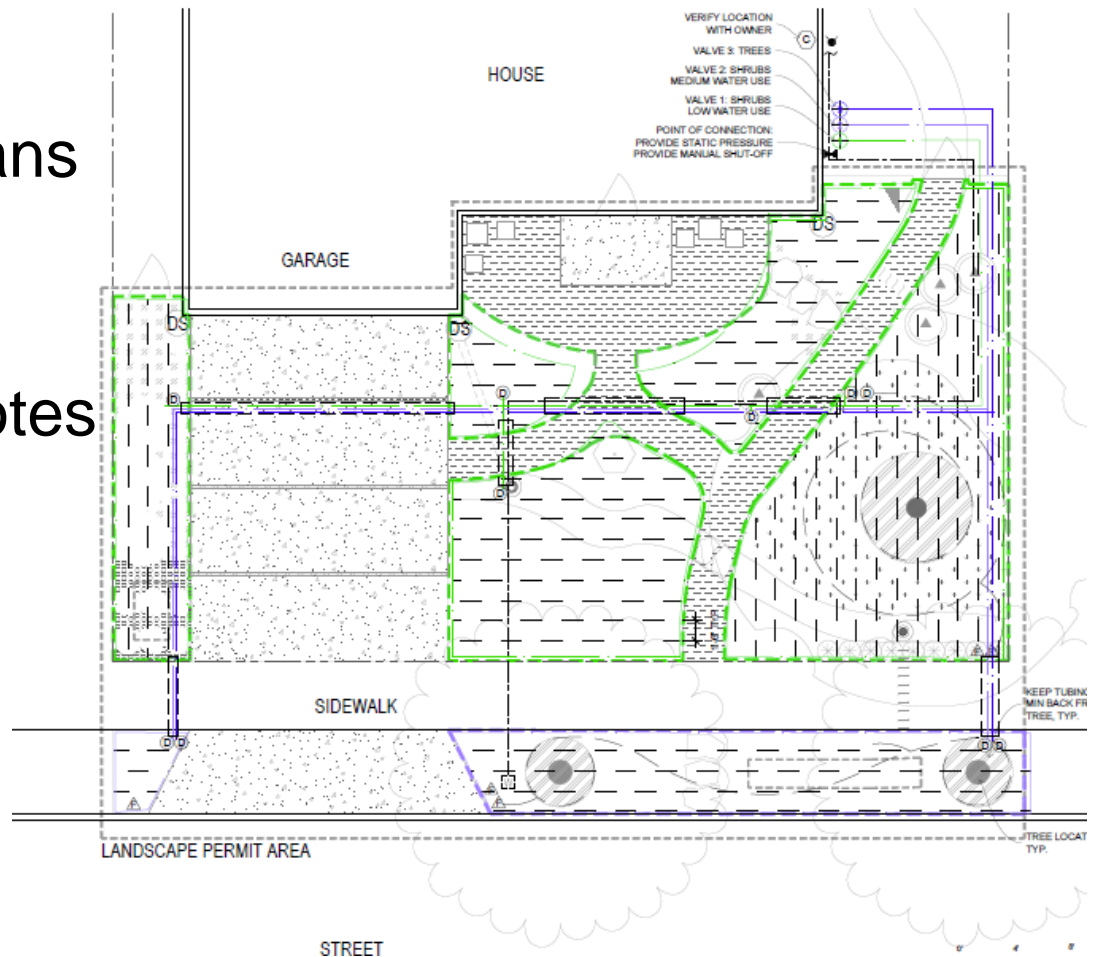
Adjust Irrigation Plan (Sheet L-2.0)

- Adjust Lot Lines
 - Lay the Template sheet L-2.0 *on top of* L-1.0
 - Match property boundary, front of the building footprint, driveway, sidewalk, revised planting areas, etc.

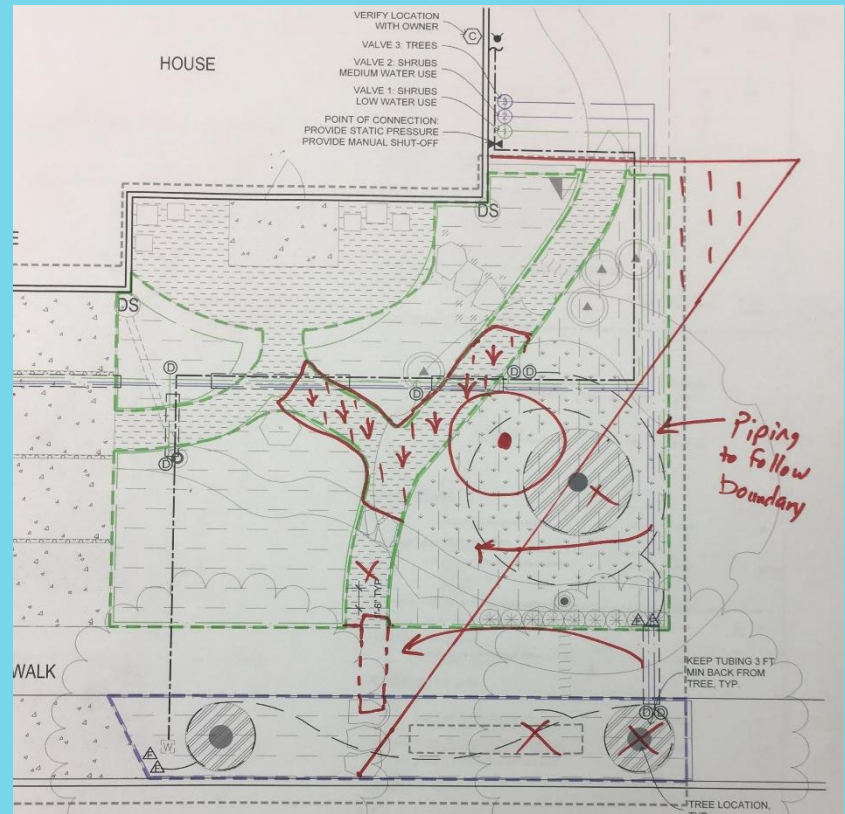
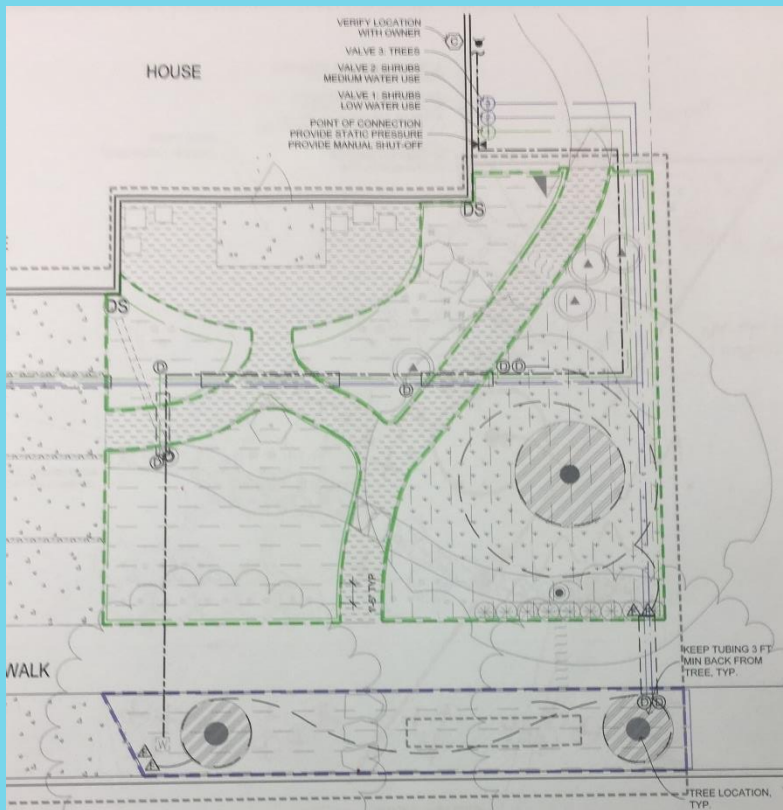


Adjust Irrigation Plan (Sheet L-2.0)

- Adjust Irrigation Plans
 - Match revised planting areas
 - Add clarifying notes
 - Reposition components
 - Controller
 - Valves



Adjust the Irrigation Plans



Adjust Irrigation Plan (Sheet L-2.0)

- Fill Out Irrigation Valve Table
 - Outline and Measure Irrigated Areas
 - # of Valves
 - Permit SQ FT

IRRIGATION VALVE TABLE

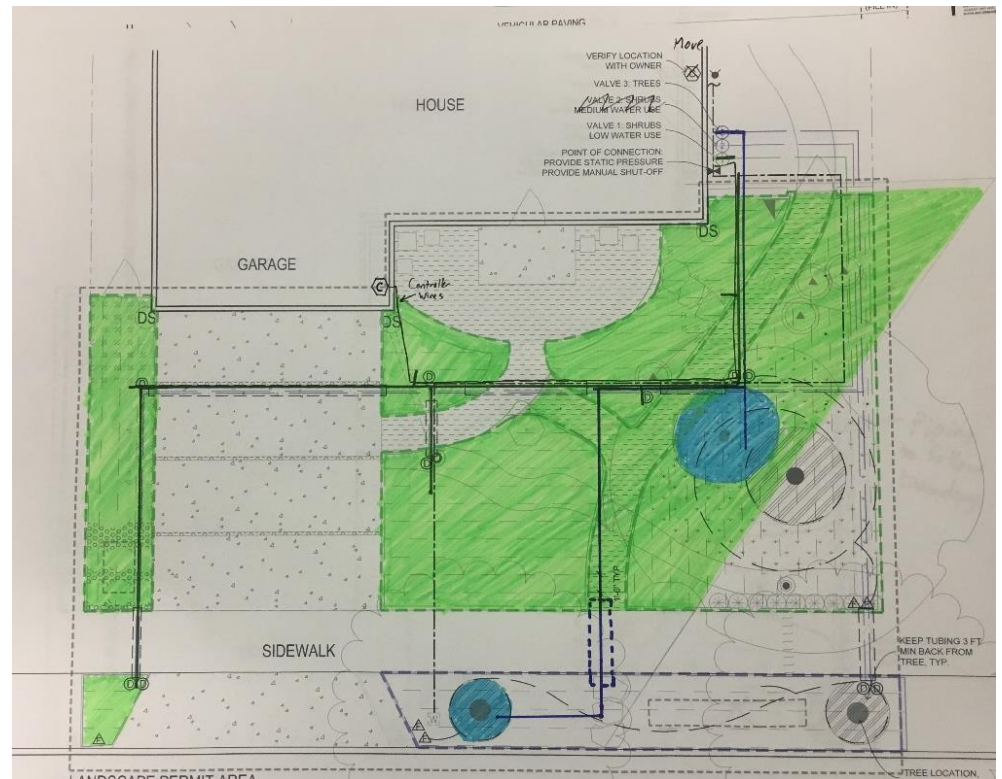
HYDRO ZONE	WATER USE	VALVE	PLAN SF	SUB - ZONES	PERMIT SF (FILL IN)	SUB - ZONES (FILL IN)	SOIL TYPE (CLAY / LOAM / SAND) (FILL IN)
1	LOW	1	1,249 SF	5			
2	MED	2	229 SF	2			
3	TREES	3	126 LF	2			
CLAY SOIL: DO NOT EXCEED 1100 SF / 3 GPM PER SUBZONE. IF TOTAL AREA OF ZONE EXCEEDS 2200 SF, ADD A VALVE.							
LOAM SOIL: DO NOT EXCEED 1100 SF / 3 GPM PER SUBZONE. IF TOTAL AREA OF ZONE EXCEEDS 2200 SF, ADD A VALVE.							
SANDY SOIL: DO NOT EXCEED 500 SF / 3 GPM PER SUBZONE. IF TOTAL AREA OF ZONE EXCEEDS 1000 SF, ADD A VALVE.							
TREE EMITTER TUBING 0.6 GPH PER LEGEND: MIN 20 LF PER VALVE; MAX 200 LF PER SUBZONE; MAX 400 LF PER VALVE							
FOR EMITTER FLOW, EMITTER SPACING & ROW SPACING PER SOIL TYPE SEE LEGEND							



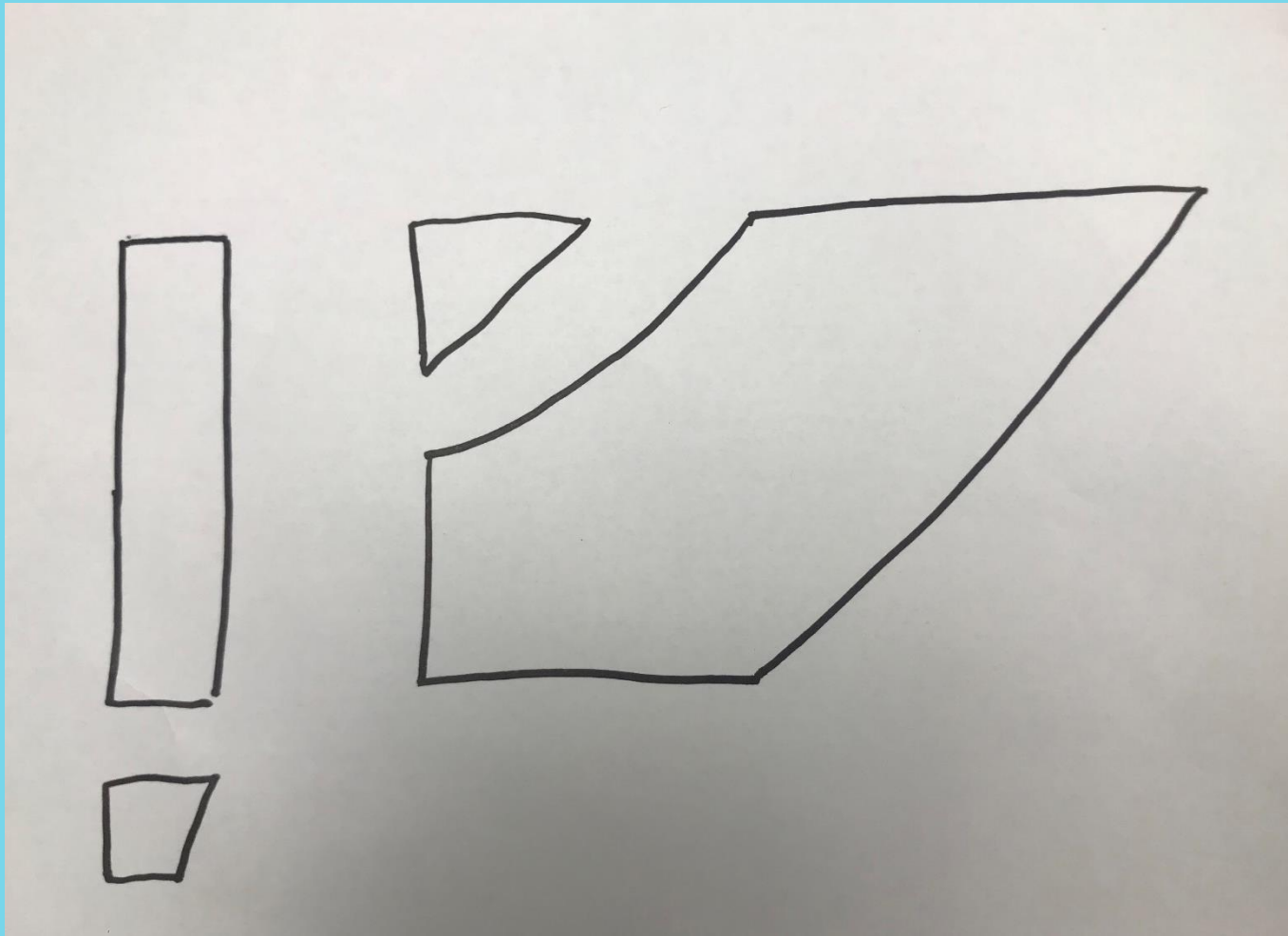
Outline and Measure Irrigated Areas

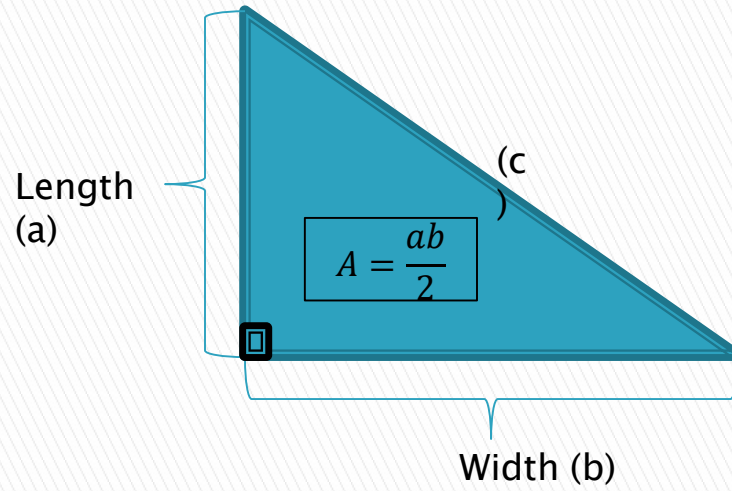
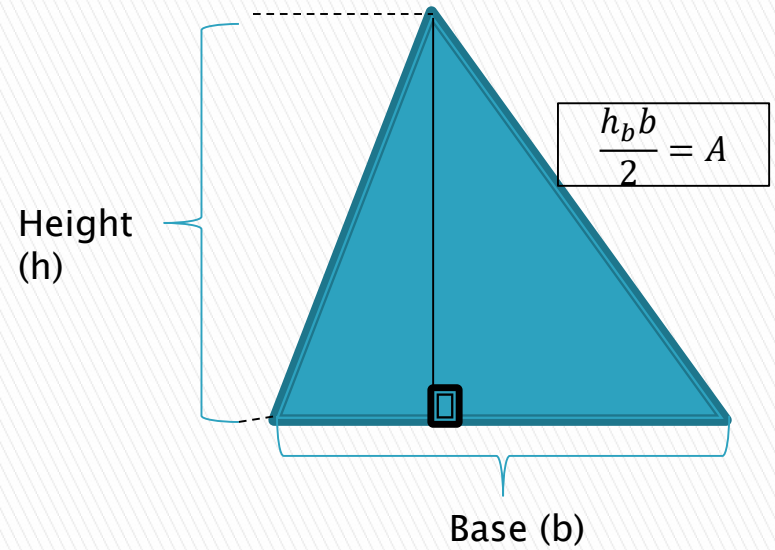
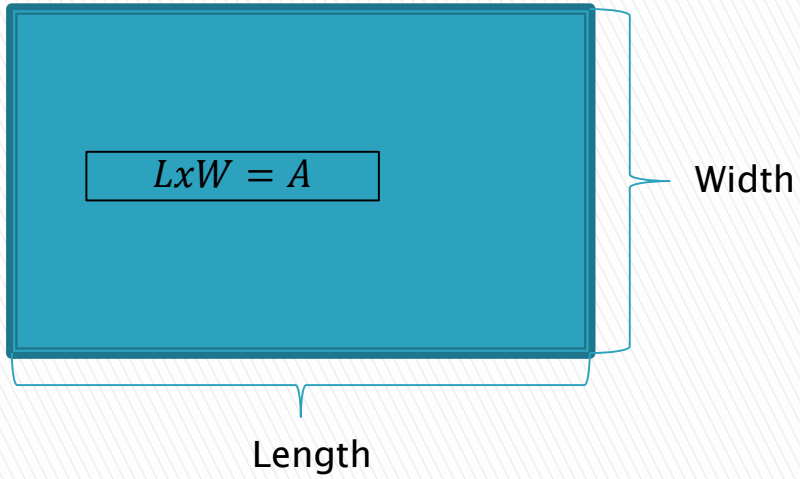
- Green = low water use hydrozone
- Blue = Tree hydrozone

Tree Size	Square Feet
Small	50
Medium	75
Large	100

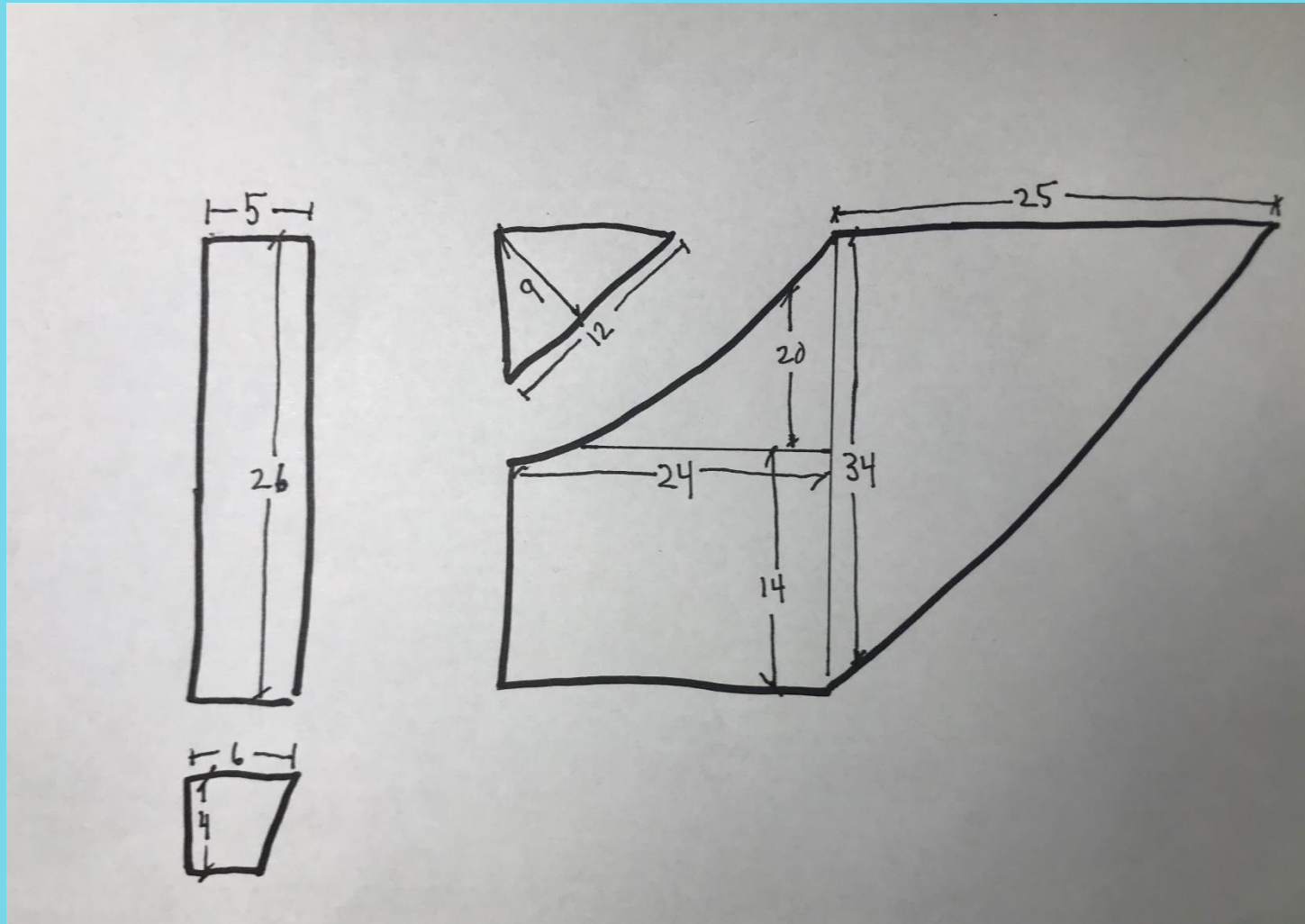


Draw the landscape area





Measure by making shapes



Calculate each area

Hydrozone 1	Shape	Formula	Area (ft²)
Low -water plants	Triangle 1	$(25 \times 34) / 2$	425
Low -water plants	Triangle 2	$(9 \times 12) / 2$	54
Low -water plants	Triangle 3	$(20 \times 24) / 2$	240
Low -water plants	Rectangle 2	24 x 14	336
Low -water plants	Rectangle 3	5 x 26	130
Low -water plants	Rectangle 4	4 x 6	24
Total Low Water Use (PERMIT SQ FT)			1,209

Adjust Irrigation Plan (Sheet L-2.0)

- Determine number of Valves

IRRIGATION VALVE TABLE

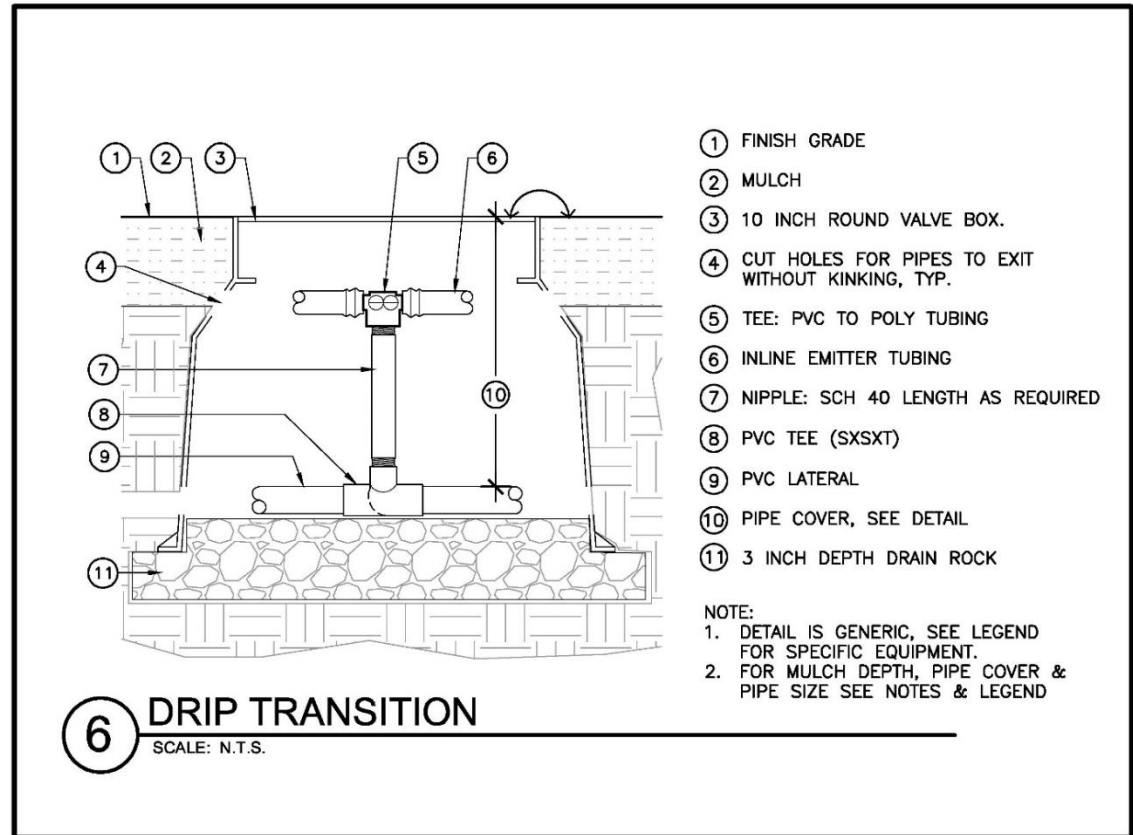
HYDRO ZONE	WATER USE	VALVE	PLAN SF	SUB - ZONES	PERMIT SF (FILL IN)	SUB - ZONES (FILL IN)	SOIL TYPE (CLAY / LOAM / SAND) (FILL IN)
1	LOW	1	1,249 SF	5			
2	MED	2	229 SF	2			
3	TREES	3	126 LF	2			
CLAY SOIL: DO NOT EXCEED 1100 SF / 3 GPM PER SUBZONE. IF TOTAL AREA OF ZONE EXCEEDS 2200 SF, ADD A VALVE. LOAM SOIL: DO NOT EXCEED 1100 SF / 3 GPM PER SUBZONE. IF TOTAL AREA OF ZONE EXCEEDS 2200 SF, ADD A VALVE. SANDY SOIL: DO NOT EXCEED 500 SF / 3 GPM PER SUBZONE. IF TOTAL AREA OF ZONE EXCEEDS 1000 SF, ADD A VALVE.							
TREE EMITTER TUBING 0.6 GPH PER LEGEND: MIN 20 LF PER VALVE; MAX 200 LF PER SUBZONE; MAX 400 LF PER VALVE FOR EMITTER FLOW, EMITTER SPACING & ROW SPACING PER SOIL TYPE SEE LEGEND							



OUR FUTURE IN EVERY DRÖP

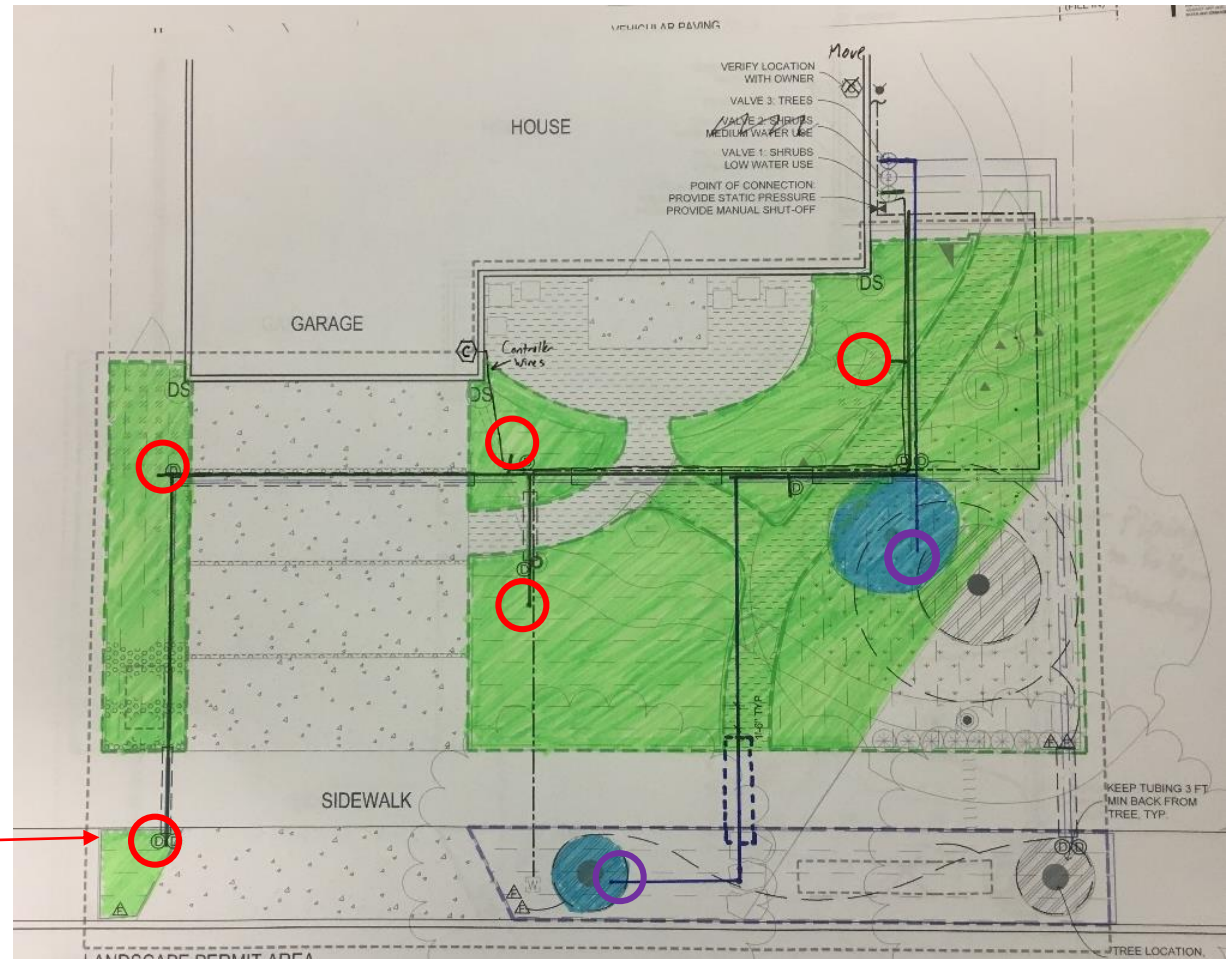
Identify Subzones on Sheet L-2.0

- Subzone detail

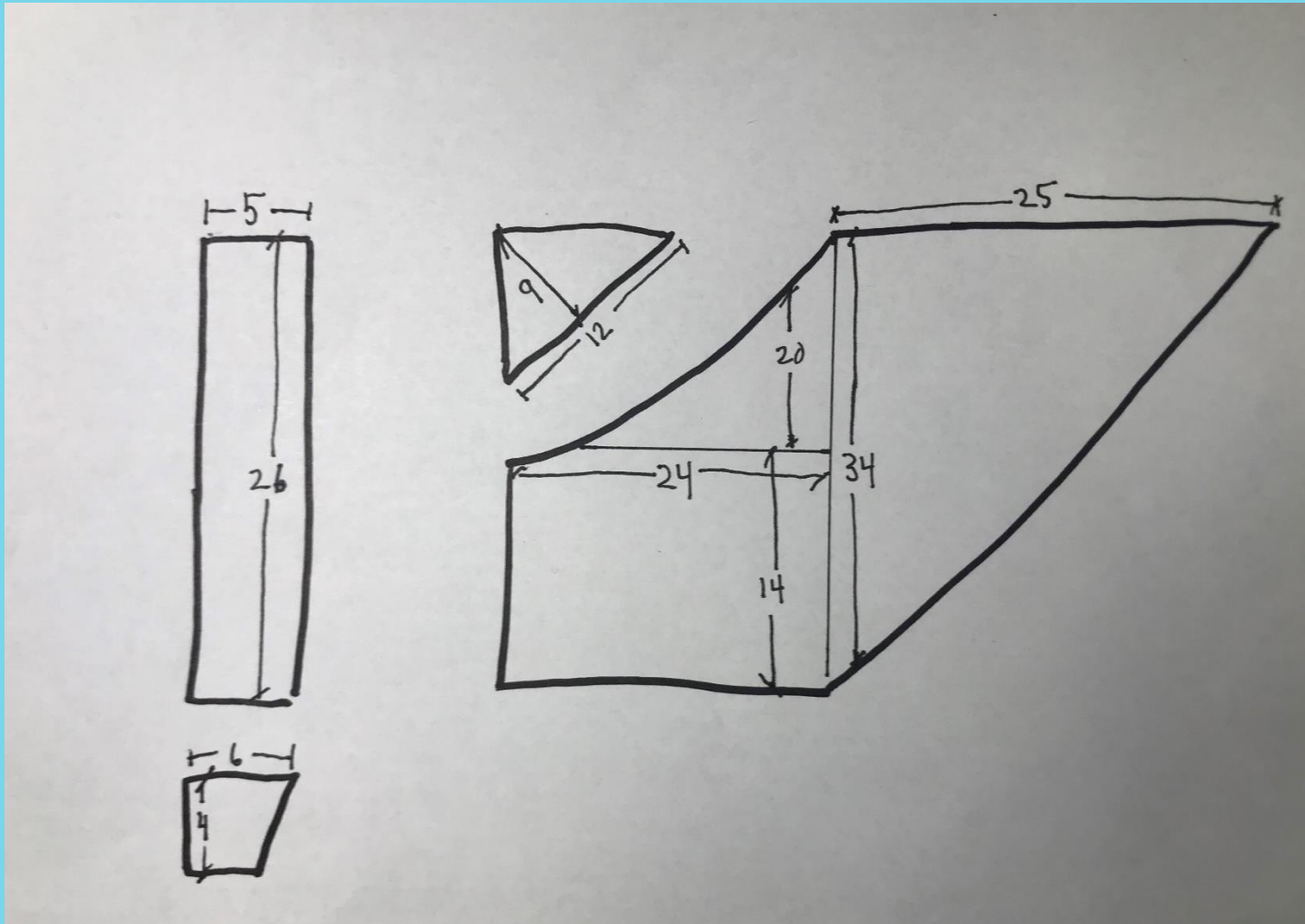


Identify Subzones on Sheet L-2.0

- Subzones are locations of pipe to drip system.



Subzone Areas



Completed Irrigation Valve Table

- Transfer all information onto Sheet L-2.0 Irrigation Valve Table

IRRIGATION VALVE TABLE

HYDRO ZONE	WATER USE	VALVE	PLAN SF	SUB - ZONES	PERMIT SF (FILL IN)	SUB - ZONES (FILL IN)	SOIL TYPE (CLAY / LOAM / SAND) (FILL IN)
1	LOW	1	1,249 SF	5	1209	5	clay loam
2	MED	2	229 SF	2			
3	TREES	3	126 LF	2			
CLAY SOIL: DO NOT EXCEED 1100 SF / 3 GPM PER SUBZONE. IF TOTAL AREA OF ZONE EXCEEDS 2200 SF, ADD A VALVE.							
LOAM SOIL: DO NOT EXCEED 1100 SF / 3 GPM PER SUBZONE. IF TOTAL AREA OF ZONE EXCEEDS 2200 SF, ADD A VALVE.							
SANDY SOIL: DO NOT EXCEED 500 SF / 3 GPM PER SUBZONE. IF TOTAL AREA OF ZONE EXCEEDS 1000 SF, ADD A VALVE.							
TREE EMITTER TUBING 0.6 GPH PER LEGEND: MIN 20 LF PER VALVE; MAX 200 LF PER SUBZONE; MAX 400 LF PER VALVE							
FOR EMITTER FLOW, EMITTER SPACING & ROW SPACING PER SOIL TYPE SEE LEGEND							



OUR FUTURE IN EVERY DRÖP

Complete 75/25 Rule Worksheet



OUR FUTURE IN EVERY DRÖP

75/25 Rule Worksheet

- Complete Four Steps
 - Adjust if needed
- Transfer Final Results to Plant Water Use Table on Sheets L-1.0 and L-2.0

ZONE / VALVE	PLAN SF	PERMIT SF
1	857	837
Total #1	837	SF

Medium Water Use Plant Zones (don't include trees)		
ZONE / VALVE	PLAN SF	PERMIT SF
2	229	120
Total #2	120	SF

Table 2: TREES* (do this 2nd)			
Enter the number of Small, Medium, and Large trees. The worksheet will calculate the "SF" column and Total.			
Low Water Use Trees			
TREE SIZE	NUMBER OF TREES	SF per TREE	SF
Small		50	0
Medium	1	75	75
Large	1	100	100
	Total #3	175	SF
Medium Water Use Trees			
TREE SIZE	NUMBER OF TREES	SF per TREE	SF
Small		50	0
Medium		75	0
Large		100	0
	Total #4	0	SF

Total SF All Plants and Trees E (= A + C):	1132	PERMIT SF (FILL IN)
% Low Water Use Plants and Trees B (= A ÷ E x 100):	89.4%	PERMIT % (FILL IN)
% Medium Water Use Plants and Trees D (= C ÷ E x 100):	10.6%	PERMIT % (FILL IN)
Total % All Plants and Trees F (= B + D):	100.0%	PERMIT % (FILL IN)

Table 4: Plant Water Use Table (do this last)			
4) The worksheet will fill in most of Table 4 using totals from Table 3. PLAN SF (%) should be filled in manually to match what is shown on the Plant Water Use Table in the Template.			

PLANT WATER USE TABLE			
WATER USE	PLAN SF (%)	PERMIT SF (FILL IN)	PERMIT % (FILL IN)
LOW	857 (79%)	1012	89.4%
MED	229 (21%)	120	10.6%
TOTAL	1086 (100%)	1132	100.0%

Transfer these values to Plant Water Use Tables on Sheet L-1.0 and Sheet L-2.0

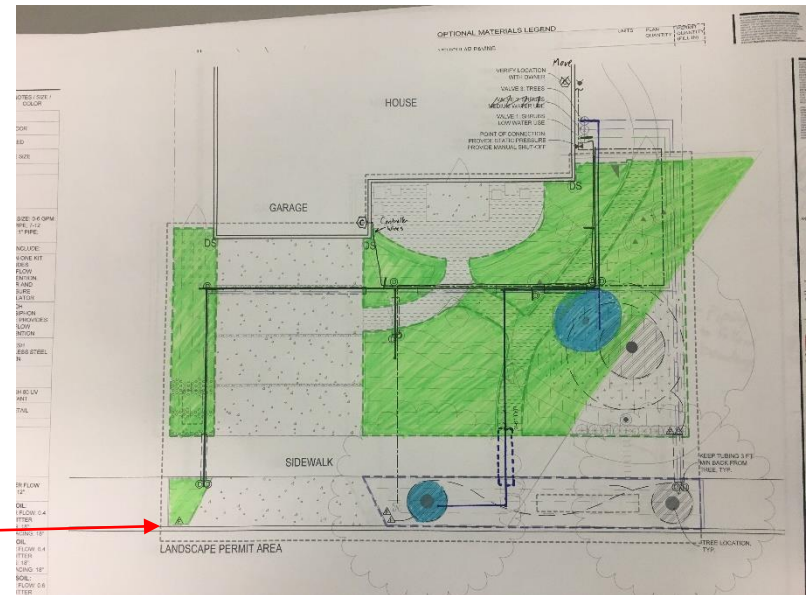
*Existing trees are exempt from the 75/25 Rule. Do not add them to this table. If you are adding irrigation to high water use existing trees like Redwoods they must be on their own



OUR FUTURE IN EVERY DROP

Adjust the Irrigation System Layout on Sheet L-2.0

- Refer to Completed Irrigation Valve Table
 - Add or remove valves
 - Color code hydrozones
 - Identify sleeve locations
 - Draw in irrigation piping paths
 - Indicate all subzones
 - Indicate drip flushouts



Complete Application Packet



OUR FUTURE IN EVERY DRÖP

Application Packet

- ▶ Full size planting and irrigation plan sheets
- ▶ 6 steps to complete
- ▶ Required details (minimum submission)
- ▶ Optional elements
 - Sustainable landscape elements
 - Alternate pathways
 - Alternate driveways



Residential Landscape Design Template Plan Application Documents Package

Complete the Pre-Construction Permit Section when submitting the landscape plans for approval and sign the Certificate of Completion Section when project is complete and provide to the Inspector.

Pre-Construction Permit Section

Step 1: Project Information (to be filled out by Applicant)

Date: _____

Project Applicant (name): _____

Project Address: _____

Total project landscape area (≤ 2500 sf): _____ (sf)

Medium water use plant material area ($\leq 25\%$): _____ (sf)

Low to very low plant material area ($\geq 75\%$): _____ (sf)

Application

- Need to complete the Pre-Construction Steps 1-4 of the Application Packet
 - Step 1 Project Information
 - Step 2 Sign Pre-Construction Agreement
 - Step 3 Sign Disclaimer
 - Step 4 Provide Permit Agency Required Plan sheets

- Keep at least one copy of everything submitted

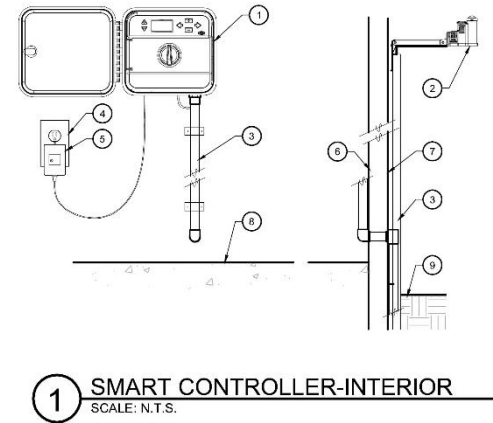


OUR FUTURE IN EVERY DRÖP

All required detail sheets

Print out all of the details sheets that are depicted on the plan sheets

- SMART Controller
- Tree, ground cover, shrub grass and perennial planting details
- Isolation ball valve
- Antisiphon valve manifold
- Sheet mulch
- Drip subzone layout either single line or multi-line
- Drip transition
- Drip flush valve
- Irrigation sleeving
- Trenching and pipe cover



Submit Plans



OUR FUTURE IN EVERY DRÖP

How to get your plans approved

- Bring your landscape plans to the Resilient City Permit Center

APPROVED

- Include with your submission:
 - The completed Application Packet
 - Copy of the 75/25 Rule Worksheet
 - All required detail sheets
 - All optional detail sheets that you are using



OUR FUTURE IN EVERY DRÖP

Landscape Deferral- Option



- You can defer for up to two years
- Prior to occupancy you still need to:
 - Submit your landscape plans
 - Install necessary sleeves under hardscape
 - Add required soil amendments and mulch the area
 - Plant all of the required trees

Complete your Project!



OUR FUTURE IN EVERY DRÖP

How to get your completed landscape inspected

- Build your landscape per plans
- Complete the Post-Construction Steps 5-6 of the Application Packet
 - Step 5 Post Construction Certification
 - Step 6 MWELo Final Inspection Checklist
- Schedule inspection with Building Department

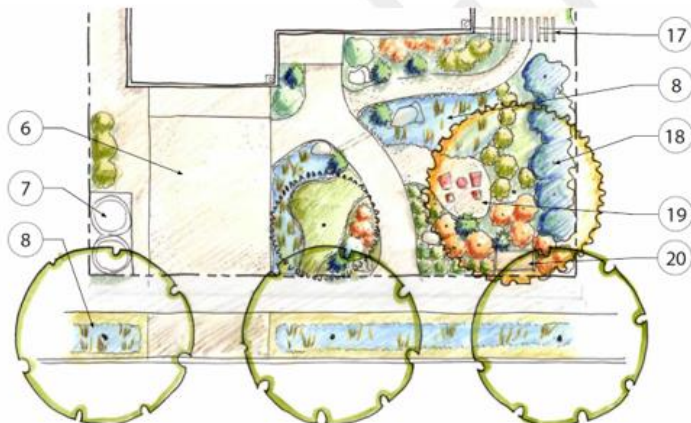


OUR FUTURE IN EVERY DRÖP

INSPECTED

City of Santa Rosa Desk Manual for the Modification of the Sonoma-Marín Saving Water Partnership's Landscape Design Templates

Working Draft: March 2019



75/25 Rule Worksheet for the City of Santa Rosa

This worksheet will tell you if you're in compliance with the 75/25 Rule. Use information from the Irrigation Valve Table on Sheet L-2.0 to fill out this worksheet, and then use this worksheet to fill in the Plant Water Use Tables on Sheet L-1.0 and Sheet L-2.0. All blue boxes must be filled in. Do not include any square footage from Special Landscape Areas (SLA) as they are excluded from the 75/25 Rule. Note, there is an automated Excel version of this worksheet.

Table 1: PLANTS (do this 1st)

Use the irrigation valve Table on Sheet L-2.0 to fill in the IRRIGATION VALVE number in the 1st column. Then enter the PLAN SF for this zone from the Template in the 2nd column, the PERMIT SF from your revised Layout & Planting plan in the 3rd column, and Total.

Low Water Use Plant Zones (don't include trees)		
ZONE / VALVE	PLAN SF	PERMIT SF
Total #1		SF

Medium Water Use Plant Zones (don't include trees)		
ZONE / VALVE	PLAN SF	PERMIT SF
Total #2		SF

Table 2: TREES* (do this 2nd)

number by the "SF per TREE." Fill in the "SF" column, and then Total.

Low Water Use Trees		
TREE SIZE	NUMBER OF TREES	SF per TREE
Small		50
Medium		75
Large		100
Total #3		SF

Medium Water Use Trees		
TREE SIZE	NUMBER OF TREES	SF per TREE
Small		50
Medium		75
Large		100
Total #4		SF

Table 3: Total Square Footage (SF) Calculations (do this 3rd)

Low Water Use Plants and Trees A (= Total #1 + Total #3)		PERMIT SF (FILL IN)
Medium Water Use Plants and Trees C (= Total #2 + Total #4)		PERMIT SF (FILL IN)
Total SF All Plants and Trees E (= A + C)		PERMIT SF (FILL IN)
% Low Water Use Plants and Trees B (= A ÷ E x 100)		PERMIT % (FILL IN)
% Medium Water Use Plants and Trees D (= C ÷ E x 100)		PERMIT % (FILL IN)
Total % All Plants and Trees F (= B + D)		PERMIT % (FILL IN)

Table 4: Plant Water Use Table (do this last)

Use results from Table 3 to fill in Table 4. Letters A-F as listed in Table 3 are shown to demonstrate where to fill in calculated values; PLAN SF (%) should be filled in to match what is shown on the Plant Water Use Table in the Template.

WATER USE	PLANT WATER USE TABLE		
	PLAN SF (%)	PERMIT SF (FILL IN)	PERMIT % (FILL IN)
LOW		(A)	(B)
MED		(C)	(D)
TOTAL		(E)	(F)

Transfer these values to Plant Water Use Tables on Sheet L-1.0 and Sheet L-2.0

*Existing trees are exempt from the 75/25 Rule. Do not add them to this table. If you are adding irrigation to high water use existing trees like Redwoods they must be on their own



www.savingwaterpartnership.org



OUR FUTURE IN EVERY DROP